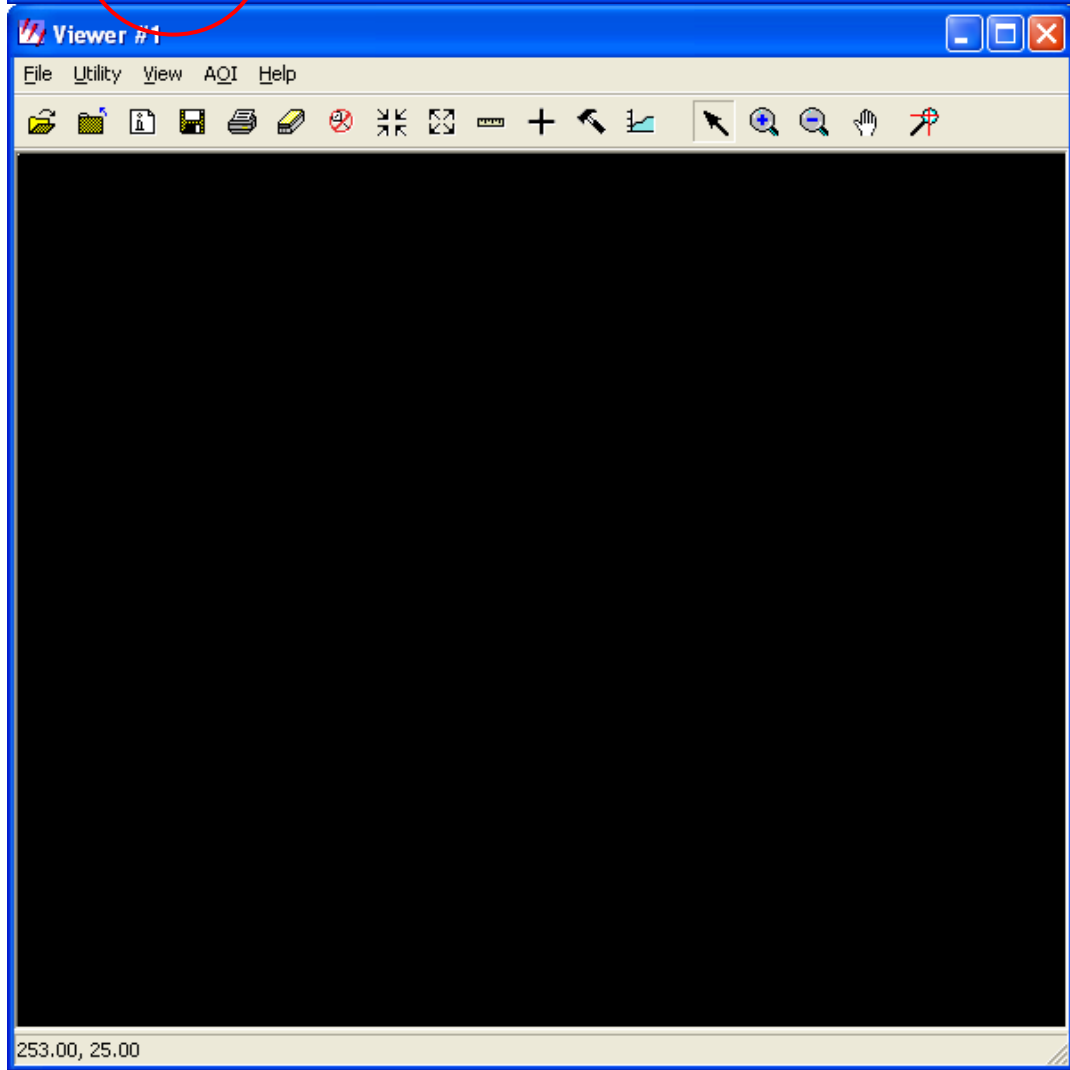
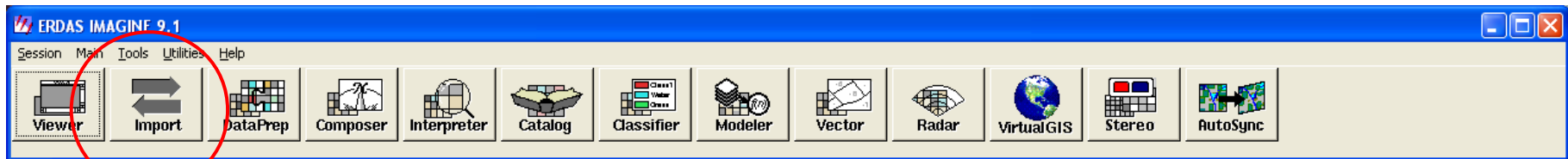
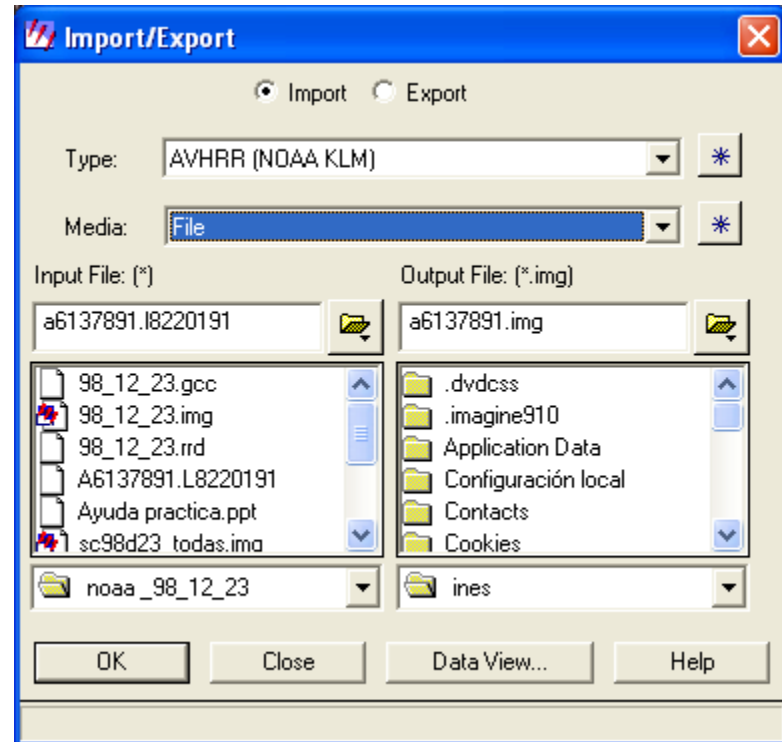
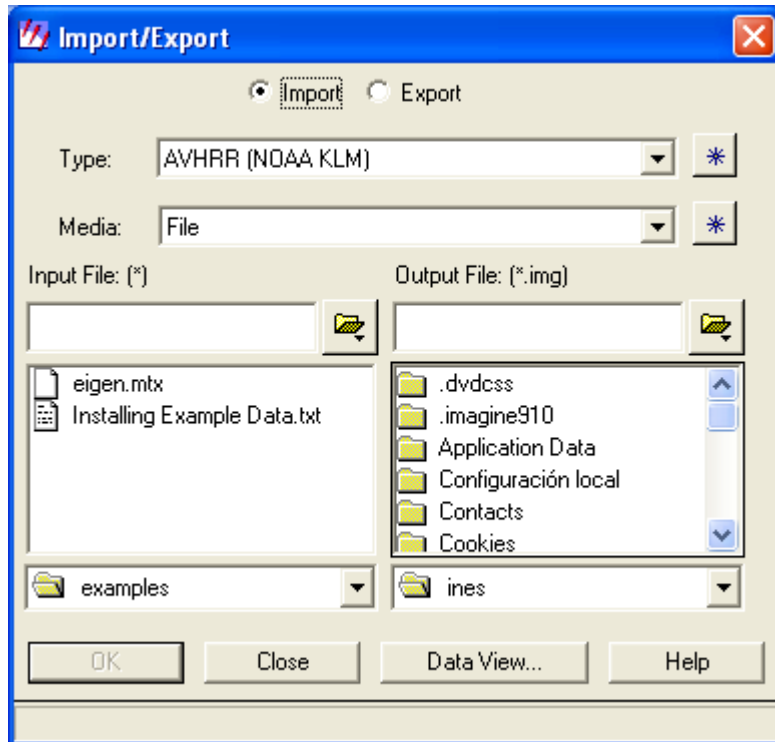


APUNTE AYUDA PARA PRÁCTICA 1 - ERDAS



Ejemplo para importar Imagen NOAA-AVHRR



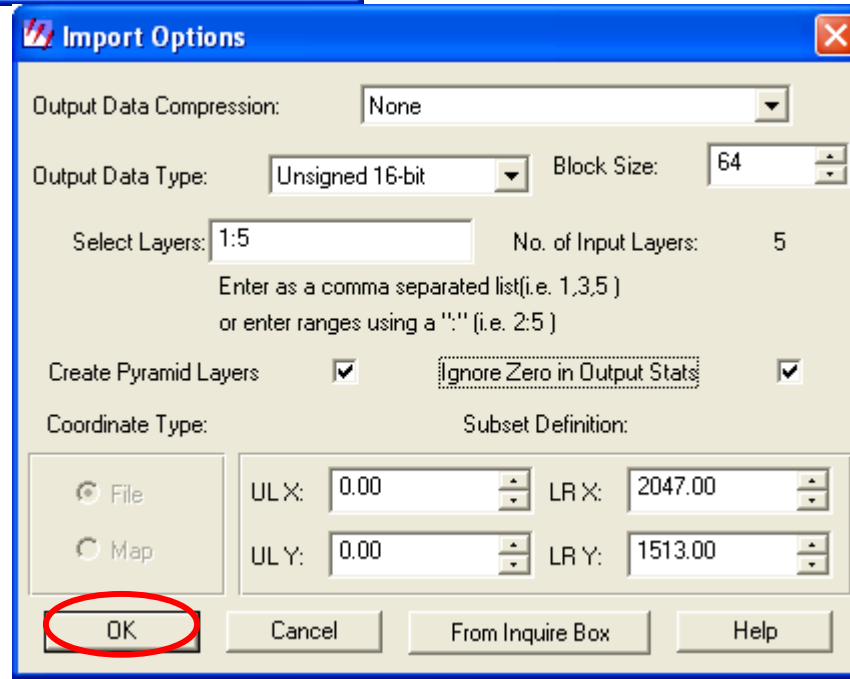
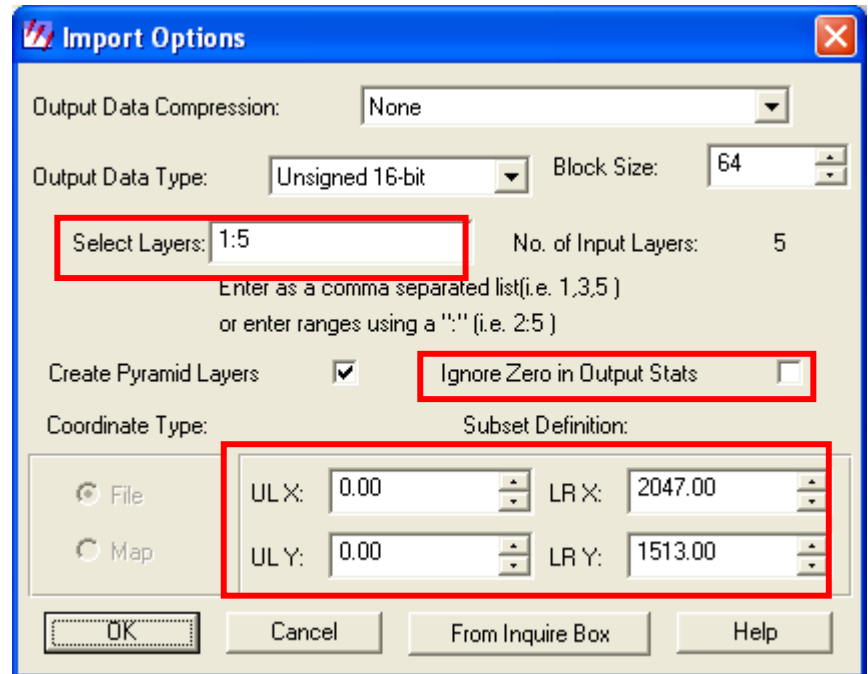
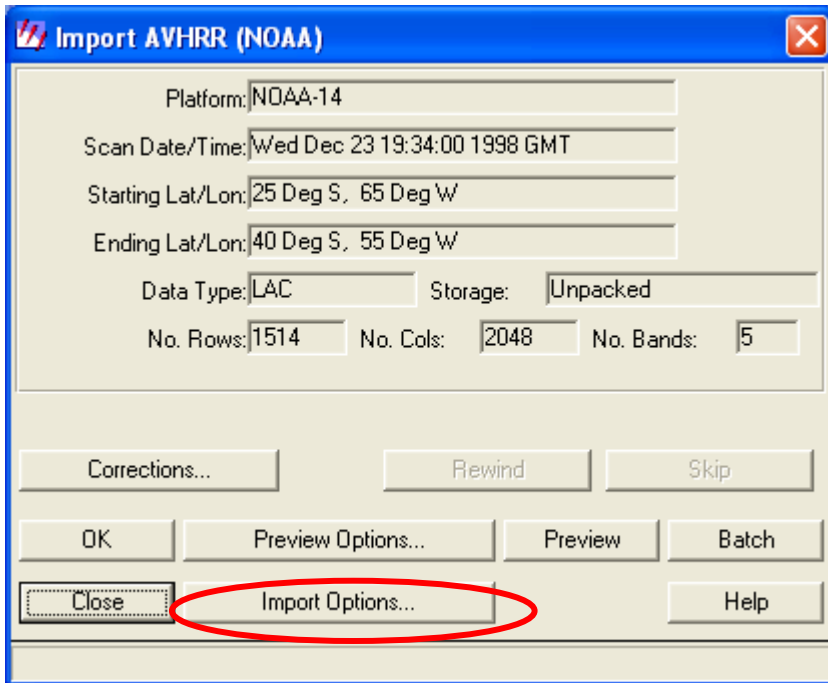
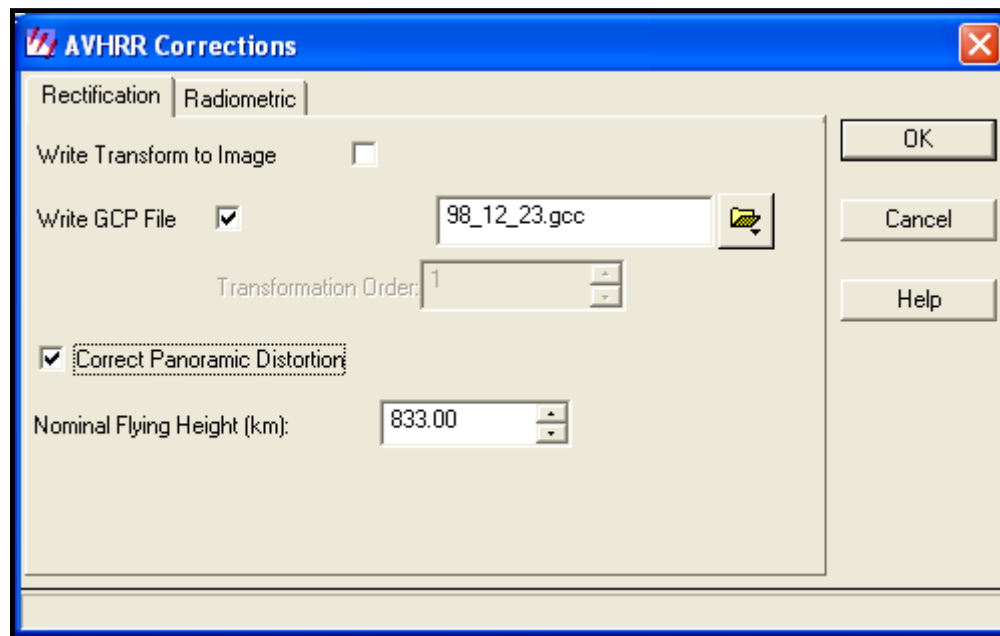
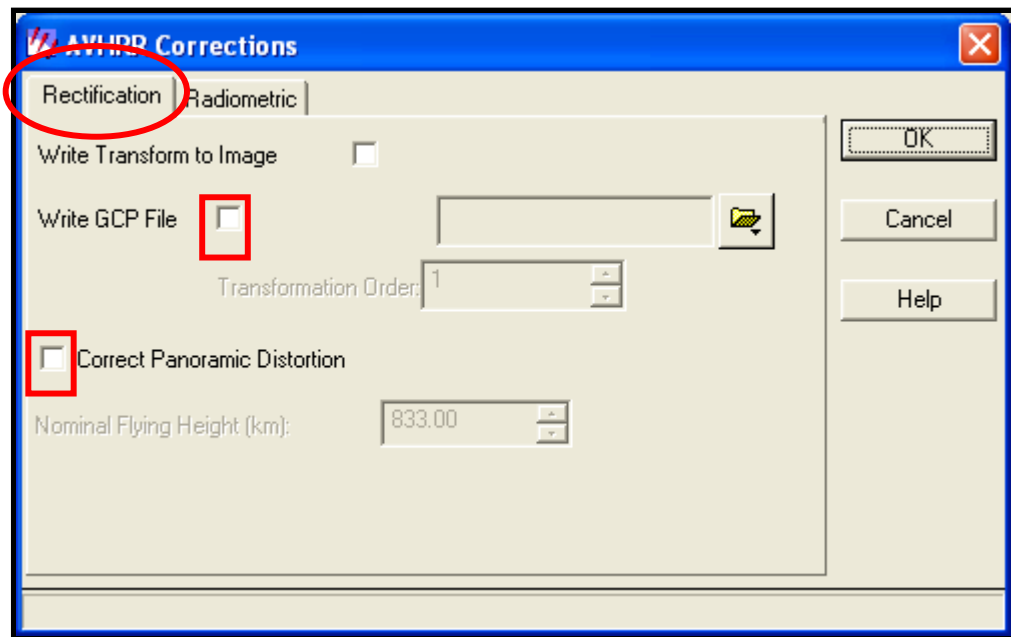
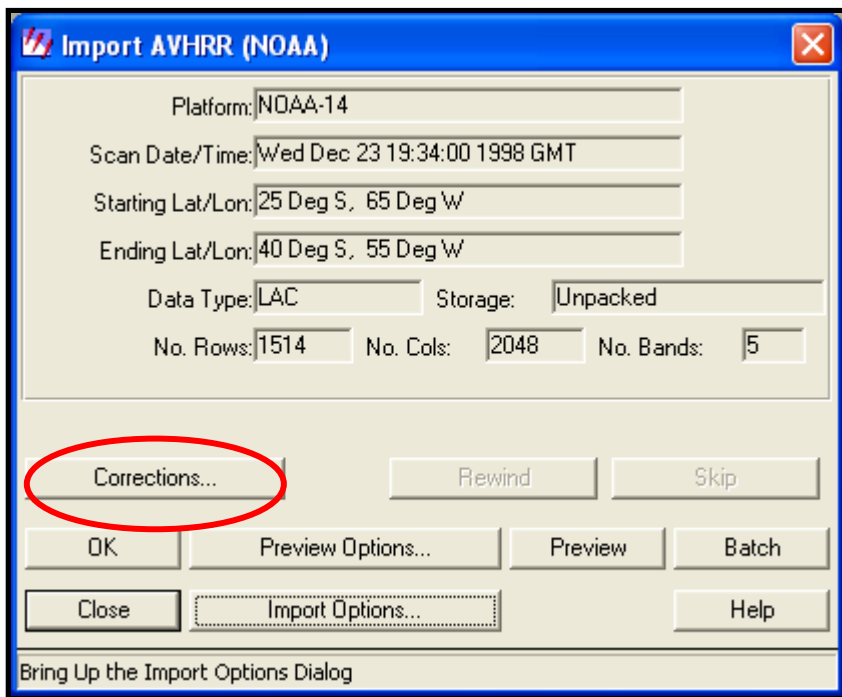
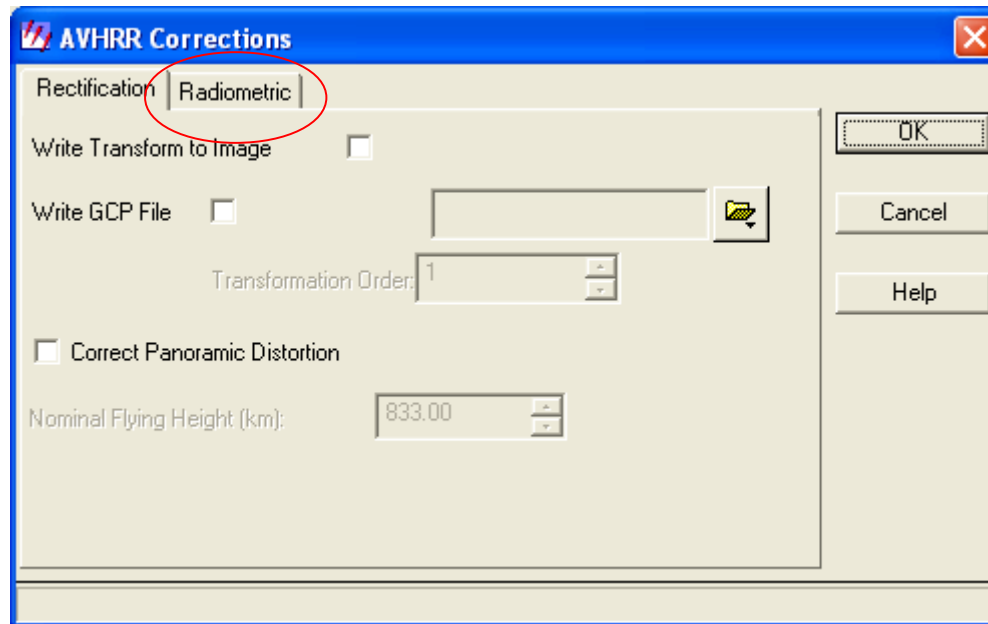


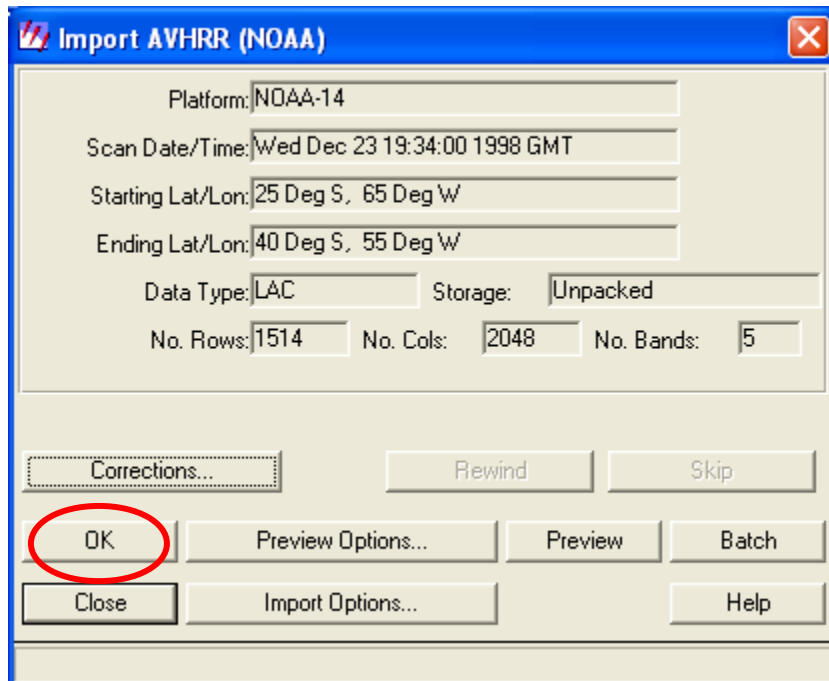
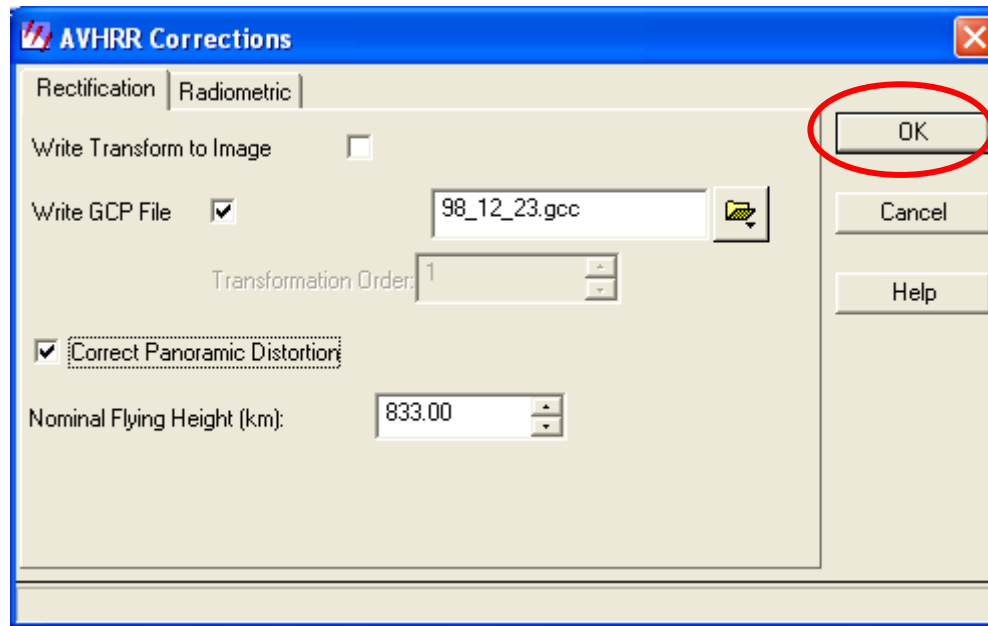
Imagen completa
o subset?

Imagen completa



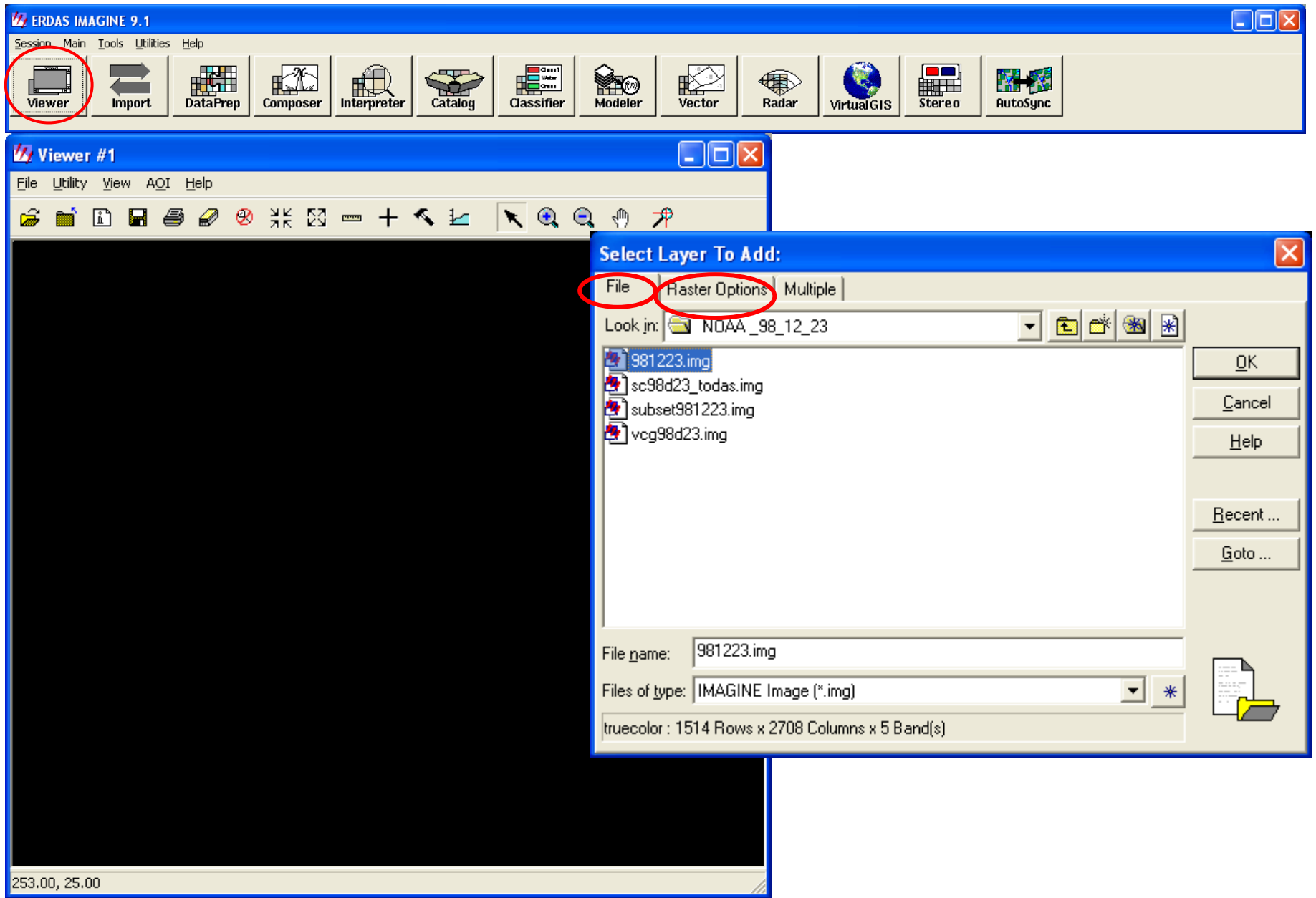


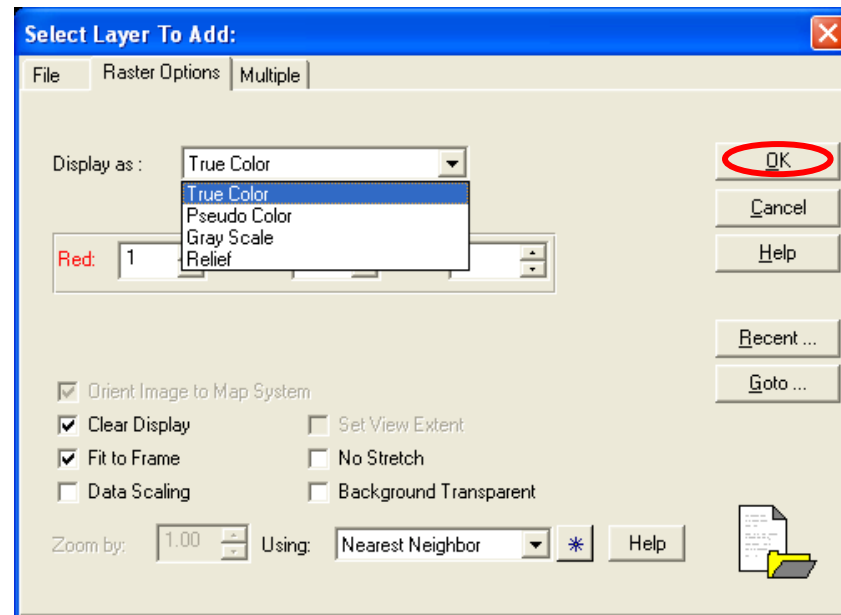
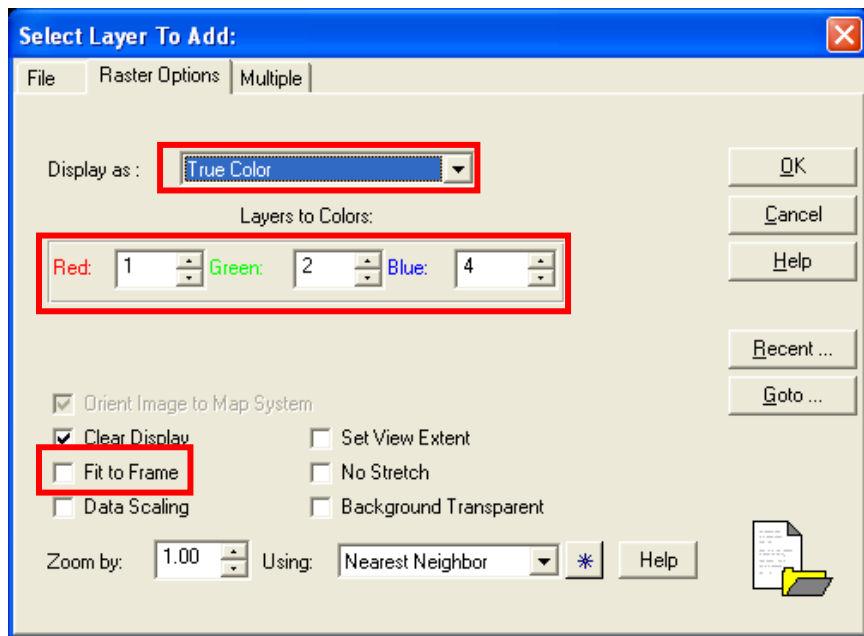
Por ahora no incluimos esta corrección



Acá finaliza el proceso de **importación** de todo el archivo traído de la NOAA

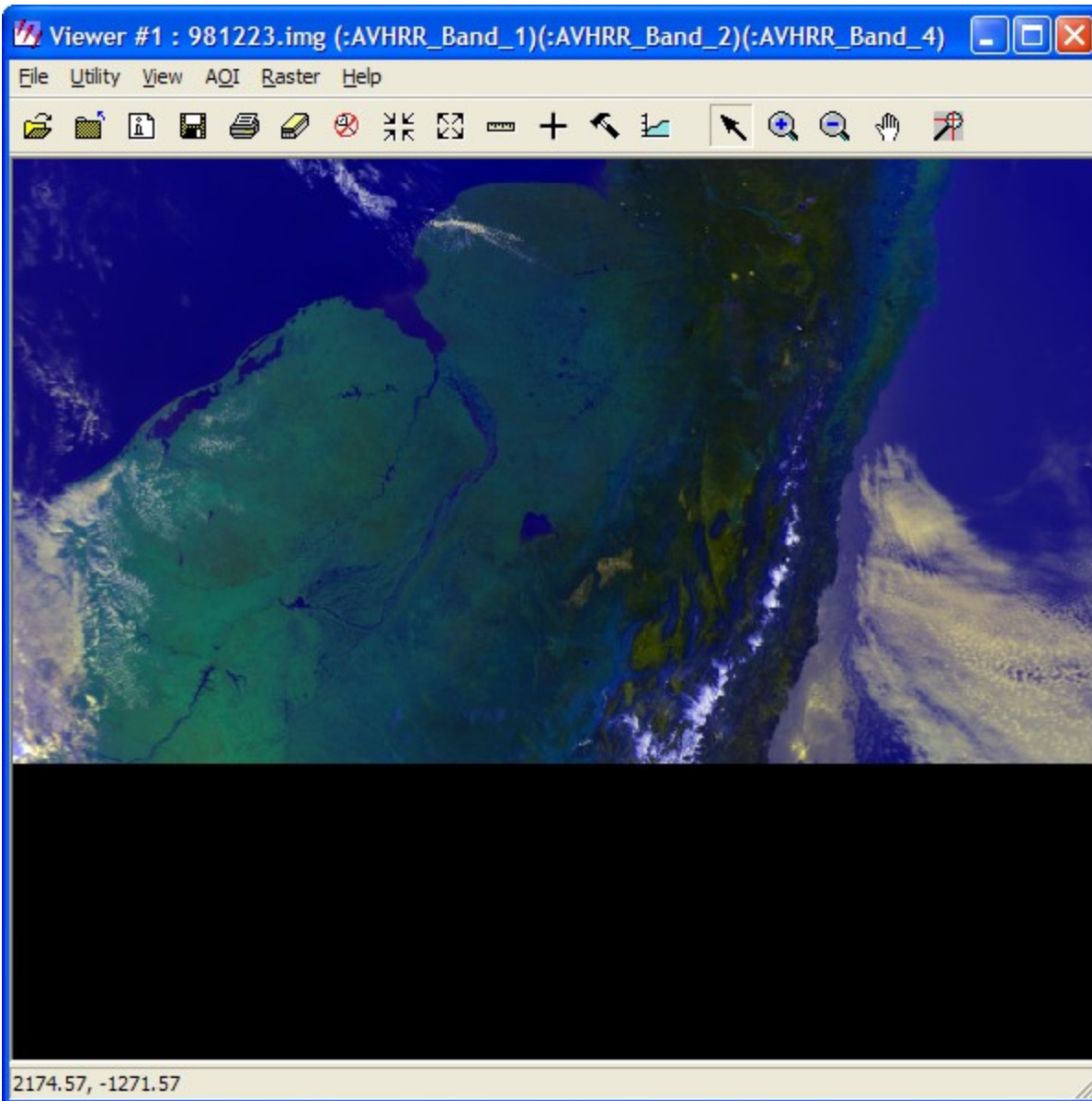
Para desplegar una imagen...

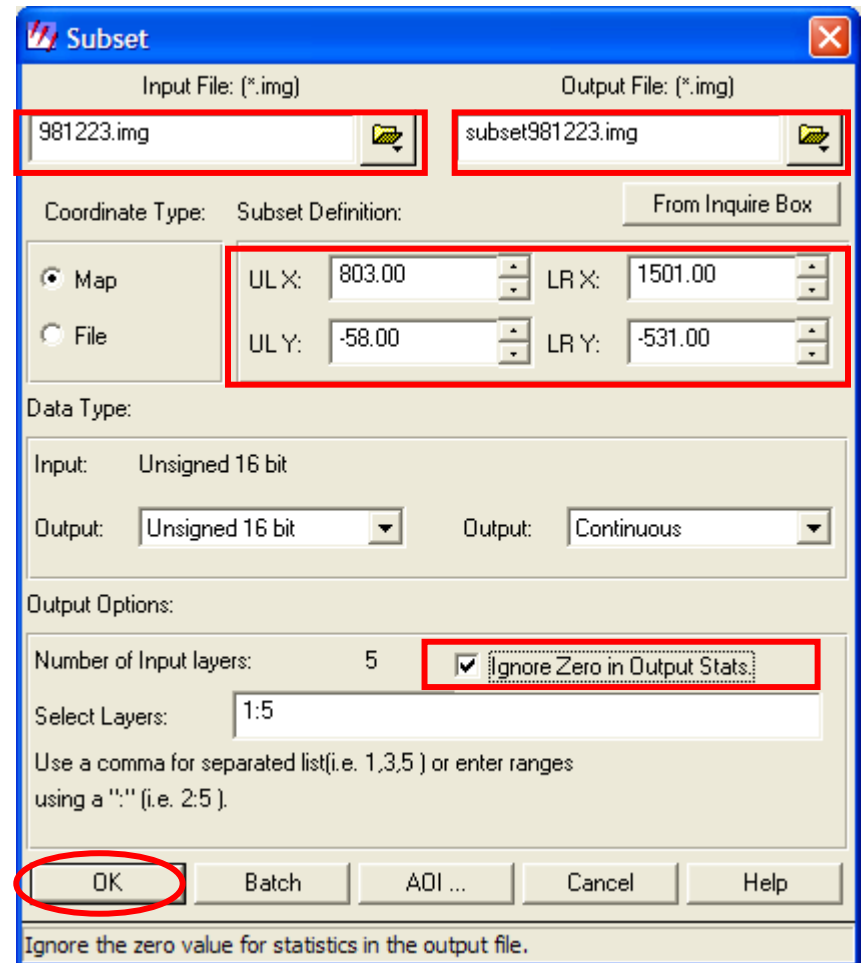
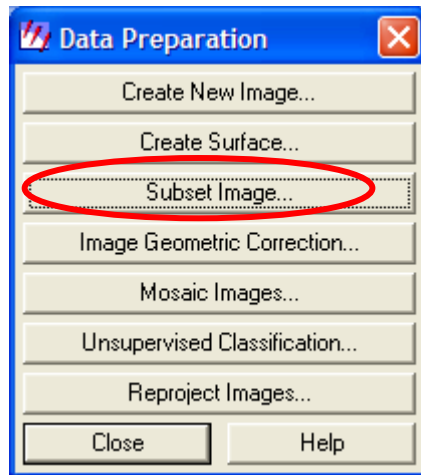
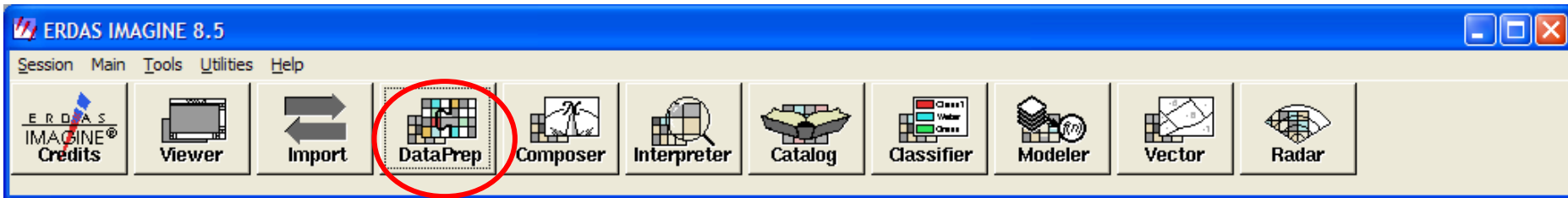




No stretch...., el soft por default hace un stretch lineal para desplegar la imagen

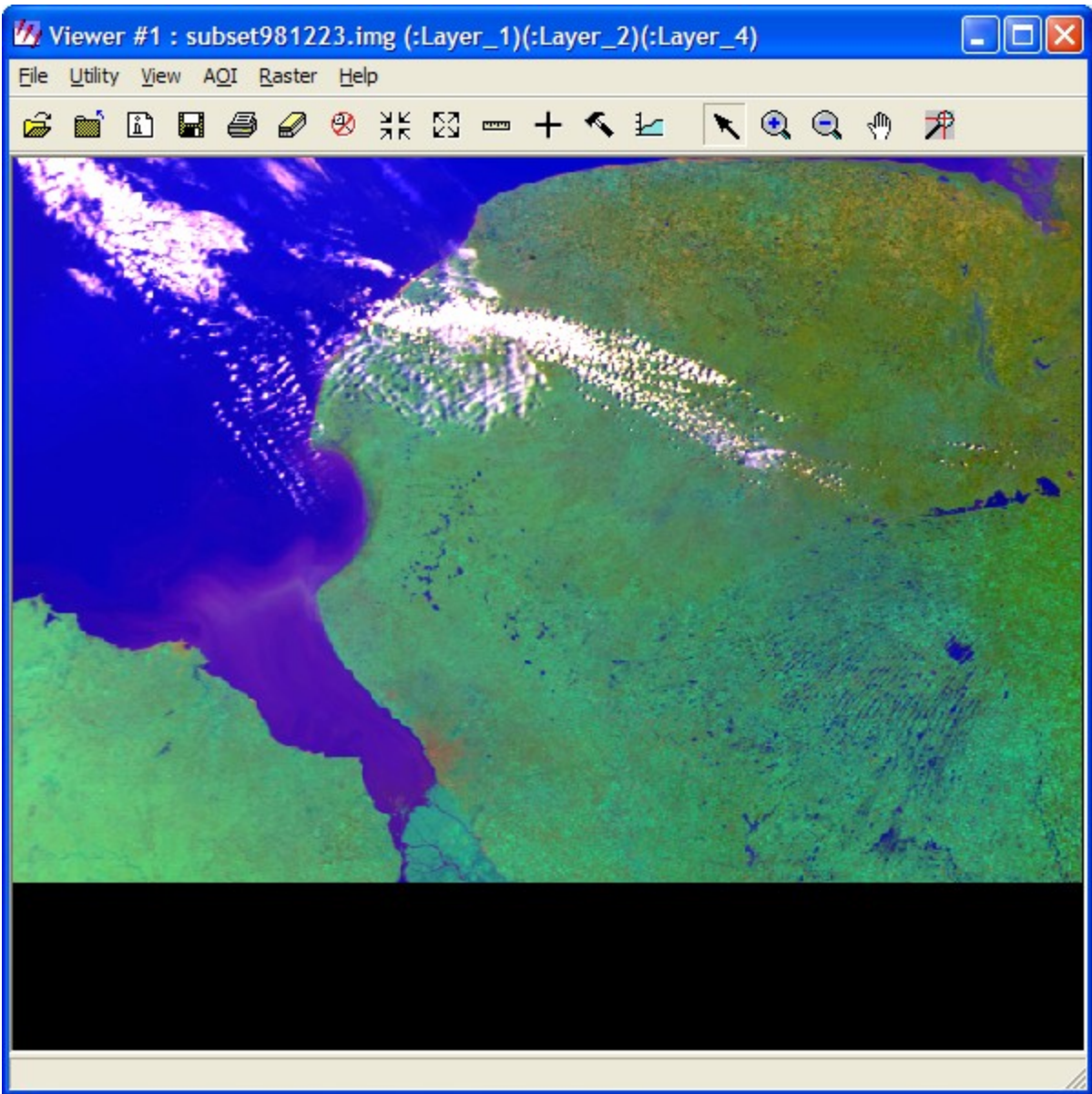


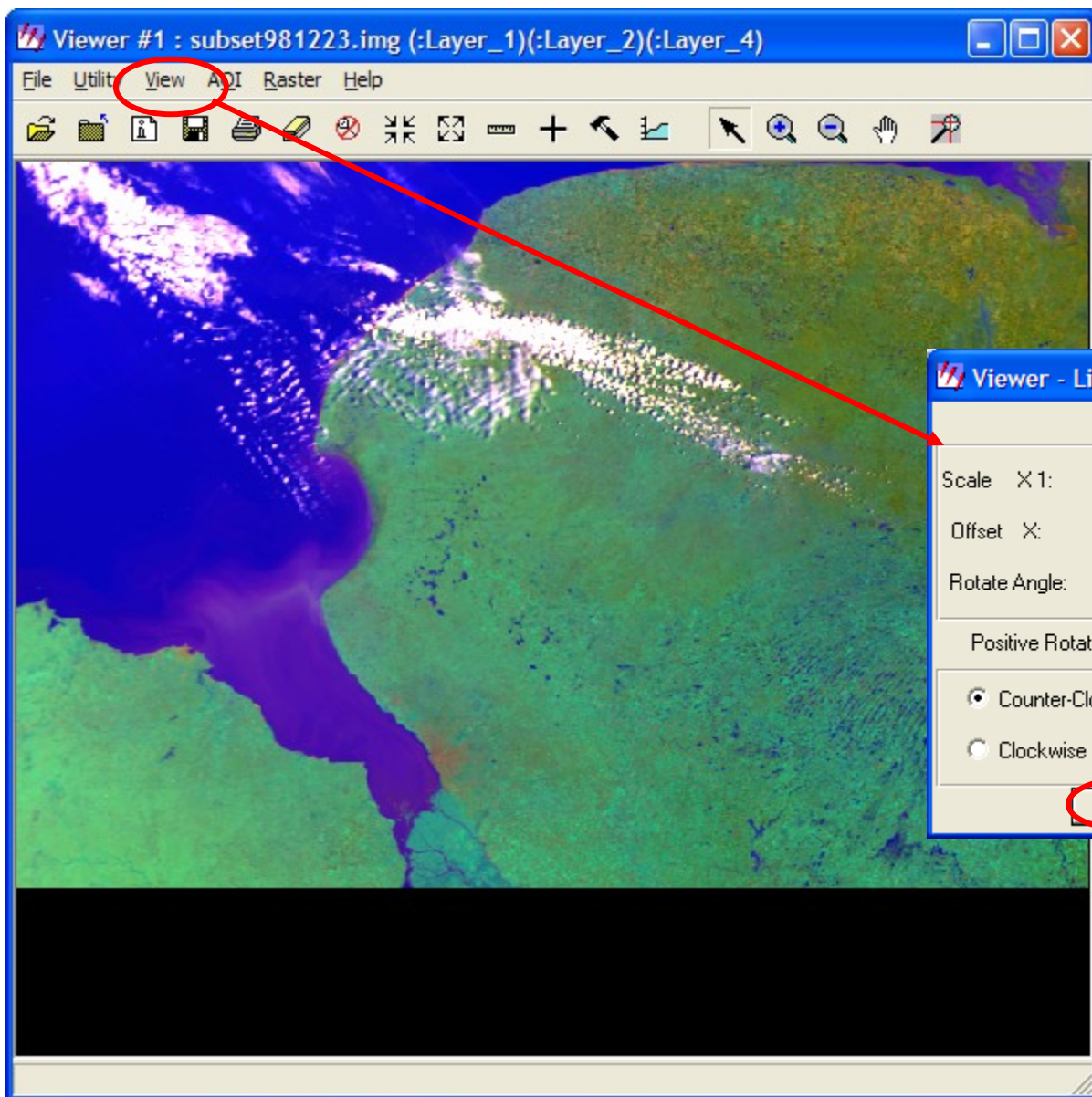




Para preparar un “subset” o “ventana”, de la imagen total

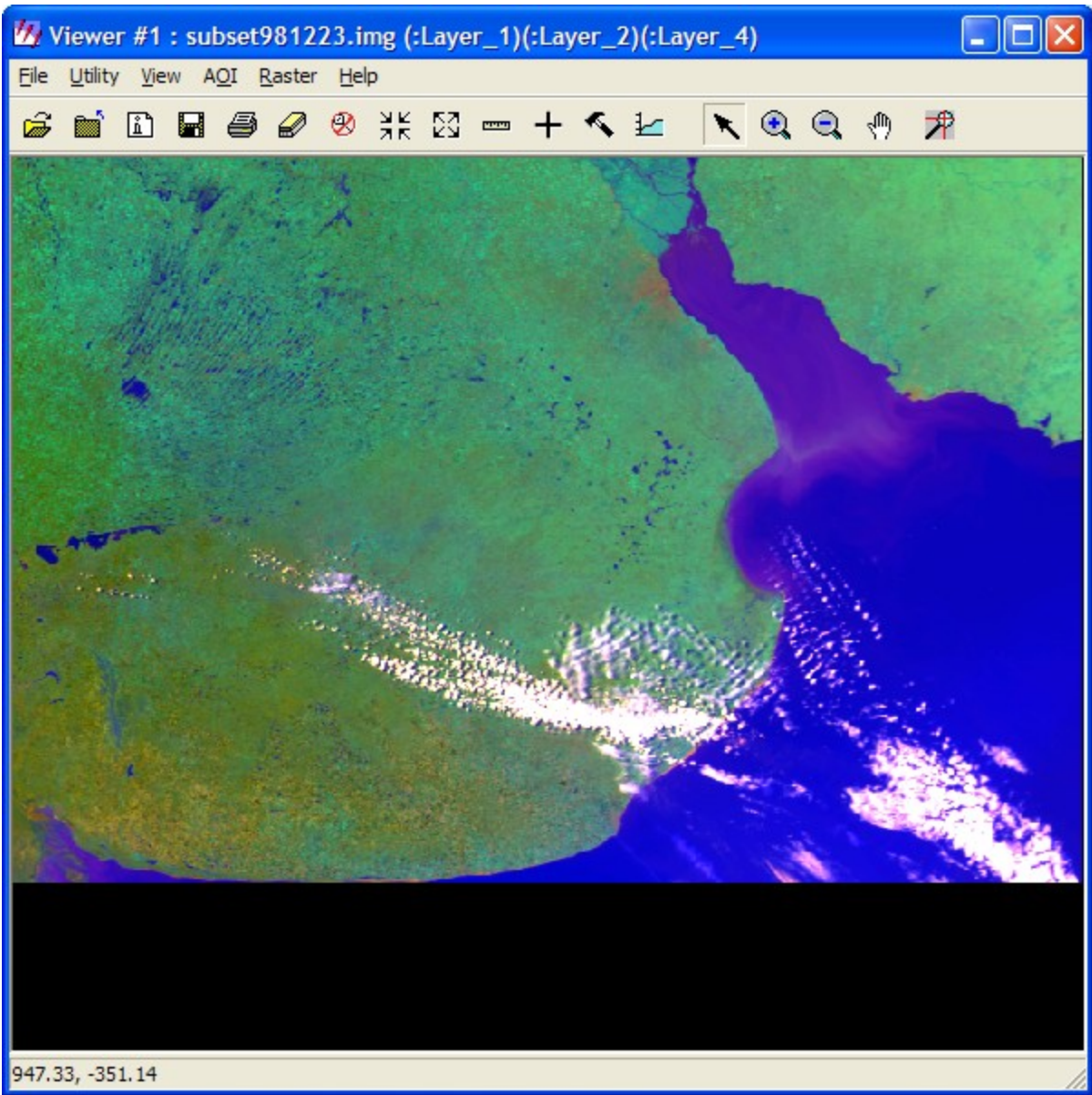
Y repetimos despliegue de imagen

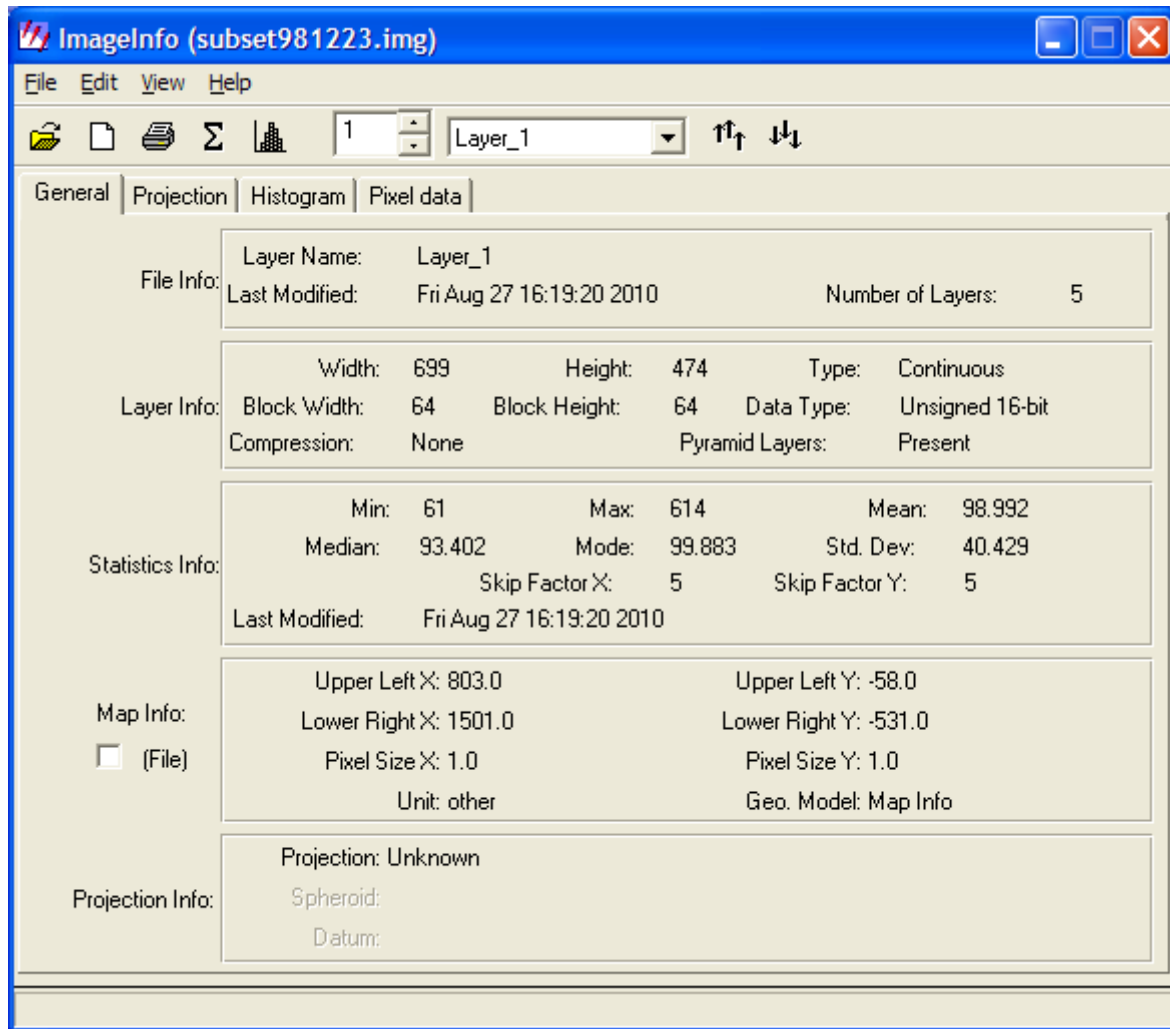


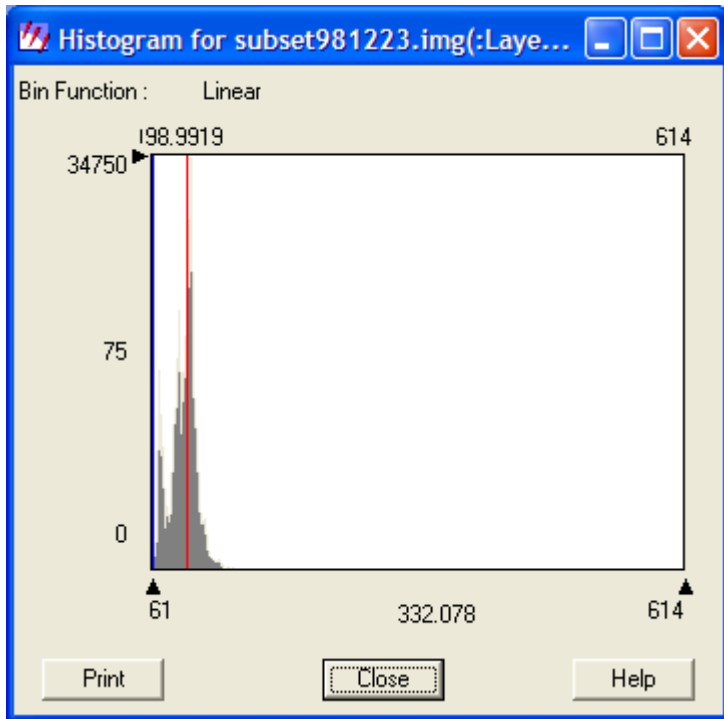


Click en View y en el despliegue ir a Rotate/Flip/Stretch





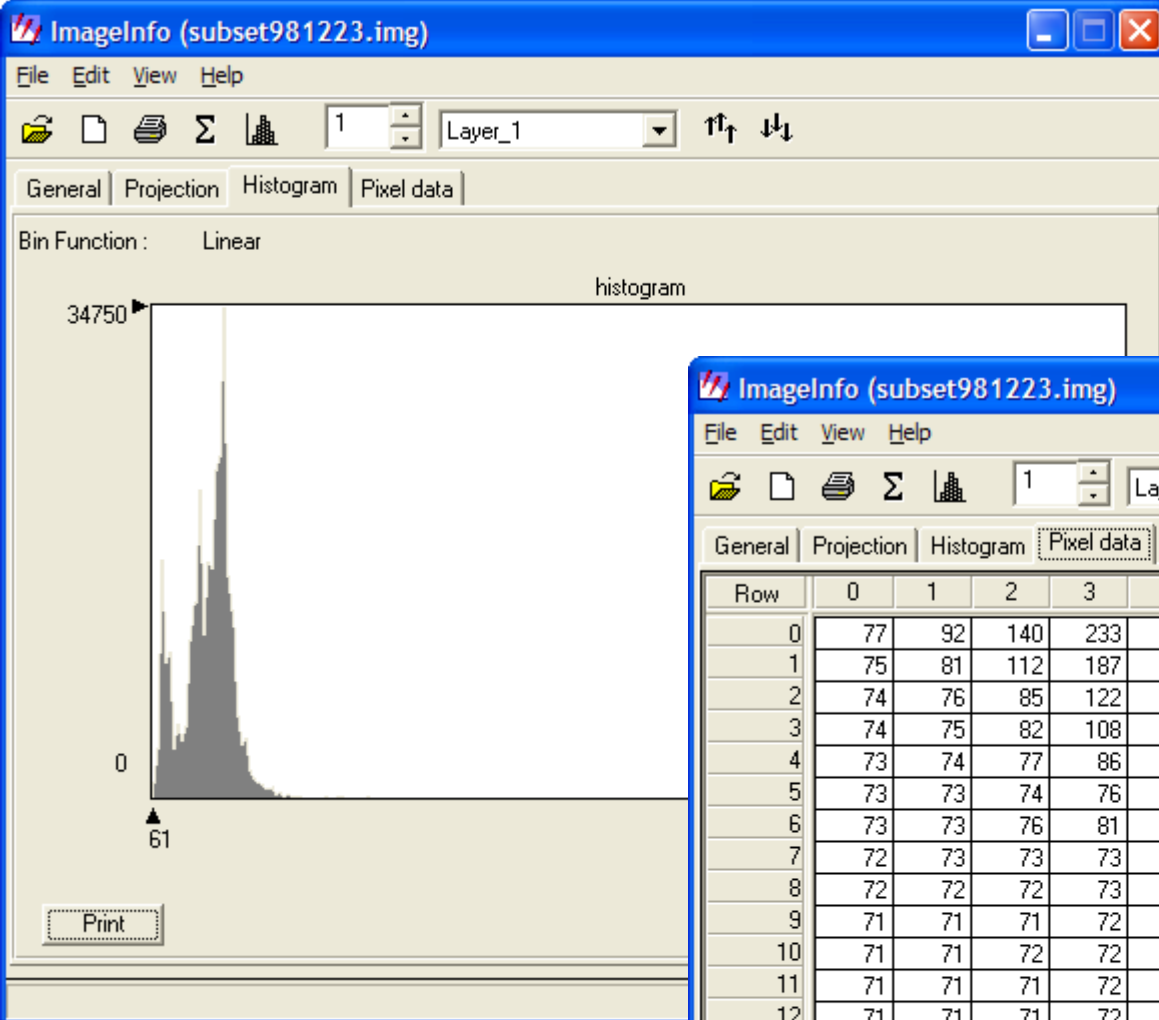




Pixel data for subset981223.img(:Laye... [-] [_] [X]

| Row | 0 | 1 | 2 | 3 | 4 | 5 | 6 |
|-----|----|----|-----|-----|-----|-----|-----|
| 0 | 77 | 92 | 140 | 233 | 311 | 326 | 315 |
| 1 | 75 | 81 | 112 | 187 | 279 | 318 | 307 |
| 2 | 74 | 76 | 85 | 122 | 234 | 305 | 291 |
| 3 | 74 | 75 | 82 | 108 | 192 | 243 | 232 |
| 4 | 73 | 74 | 77 | 86 | 124 | 202 | 226 |
| 5 | 73 | 73 | 74 | 76 | 85 | 139 | 155 |
| 6 | 73 | 73 | 76 | 81 | 76 | 85 | 106 |
| 7 | 72 | 73 | 73 | 73 | 75 | 89 | 106 |
| 8 | 72 | 72 | 72 | 73 | 76 | 94 | 104 |
| 9 | 71 | 71 | 71 | 72 | 75 | 81 | 87 |
| 10 | 71 | 71 | 72 | 72 | 74 | 76 | 78 |
| 11 | 71 | 71 | 71 | 72 | 73 | 73 | 85 |
| 12 | 71 | 71 | 71 | 72 | 72 | 72 | 84 |

Close Help



ImagInfo (subset981223.img)

File Edit View Help

1 Layer_1

General Projection Histogram Pixel data

| Row | 0 | 1 | 2 | 3 | 4 | 5 | 6 | 7 | 8 | 9 | 10 | 11 | 12 |
|-----|----|----|-----|-----|-----|-----|-----|-----|-----|-----|-----|-----|----|
| 0 | 77 | 92 | 140 | 233 | 311 | 326 | 315 | 299 | 277 | 248 | 253 | 278 | 3 |
| 1 | 75 | 81 | 112 | 187 | 279 | 318 | 307 | 284 | 260 | 233 | 234 | 266 | 3 |
| 2 | 74 | 76 | 85 | 122 | 234 | 305 | 291 | 266 | 250 | 221 | 194 | 245 | 3 |
| 3 | 74 | 75 | 82 | 108 | 192 | 243 | 232 | 216 | 214 | 205 | 187 | 248 | 3 |
| 4 | 73 | 74 | 77 | 86 | 124 | 202 | 226 | 206 | 186 | 201 | 204 | 217 | 2 |
| 5 | 73 | 73 | 74 | 76 | 85 | 139 | 155 | 149 | 156 | 185 | 156 | 156 | 2 |
| 6 | 73 | 73 | 76 | 81 | 76 | 85 | 106 | 132 | 143 | 124 | 97 | 132 | 2 |
| 7 | 72 | 73 | 73 | 73 | 75 | 89 | 106 | 108 | 95 | 84 | 95 | 140 | 2 |
| 8 | 72 | 72 | 72 | 73 | 76 | 94 | 104 | 101 | 90 | 86 | 106 | 174 | 2 |
| 9 | 71 | 71 | 71 | 72 | 75 | 81 | 87 | 89 | 86 | 86 | 108 | 159 | 1 |
| 10 | 71 | 71 | 72 | 72 | 74 | 76 | 78 | 87 | 95 | 88 | 85 | 98 | 1 |
| 11 | 71 | 71 | 71 | 72 | 73 | 73 | 85 | 108 | 119 | 94 | 83 | 103 | 1 |
| 12 | 71 | 71 | 71 | 72 | 72 | 72 | 84 | 99 | 103 | 100 | 135 | 152 | 1 |
| 13 | 71 | 71 | 71 | 72 | 71 | 70 | 77 | 86 | 97 | 119 | 175 | 190 | 1 |
| 14 | 71 | 71 | 71 | 71 | 71 | 71 | 83 | 100 | 116 | 126 | 132 | 132 | 1 |
| 15 | 71 | 71 | 71 | 71 | 71 | 73 | 85 | 107 | 122 | 113 | 94 | 100 | 1 |
| 16 | 71 | 71 | 71 | 71 | 71 | 72 | 74 | 81 | 85 | 82 | 85 | 94 | 1 |
| 17 | 71 | 71 | 71 | 71 | 71 | 73 | 74 | 74 | 75 | 77 | 83 | 91 | 1 |
| 18 | 71 | 71 | 71 | 71 | 71 | 72 | 72 | 72 | 73 | 74 | 77 | 90 | 1 |
| 19 | 71 | 71 | 71 | 71 | 71 | 71 | 72 | 72 | 72 | 74 | 78 | 88 | 1 |